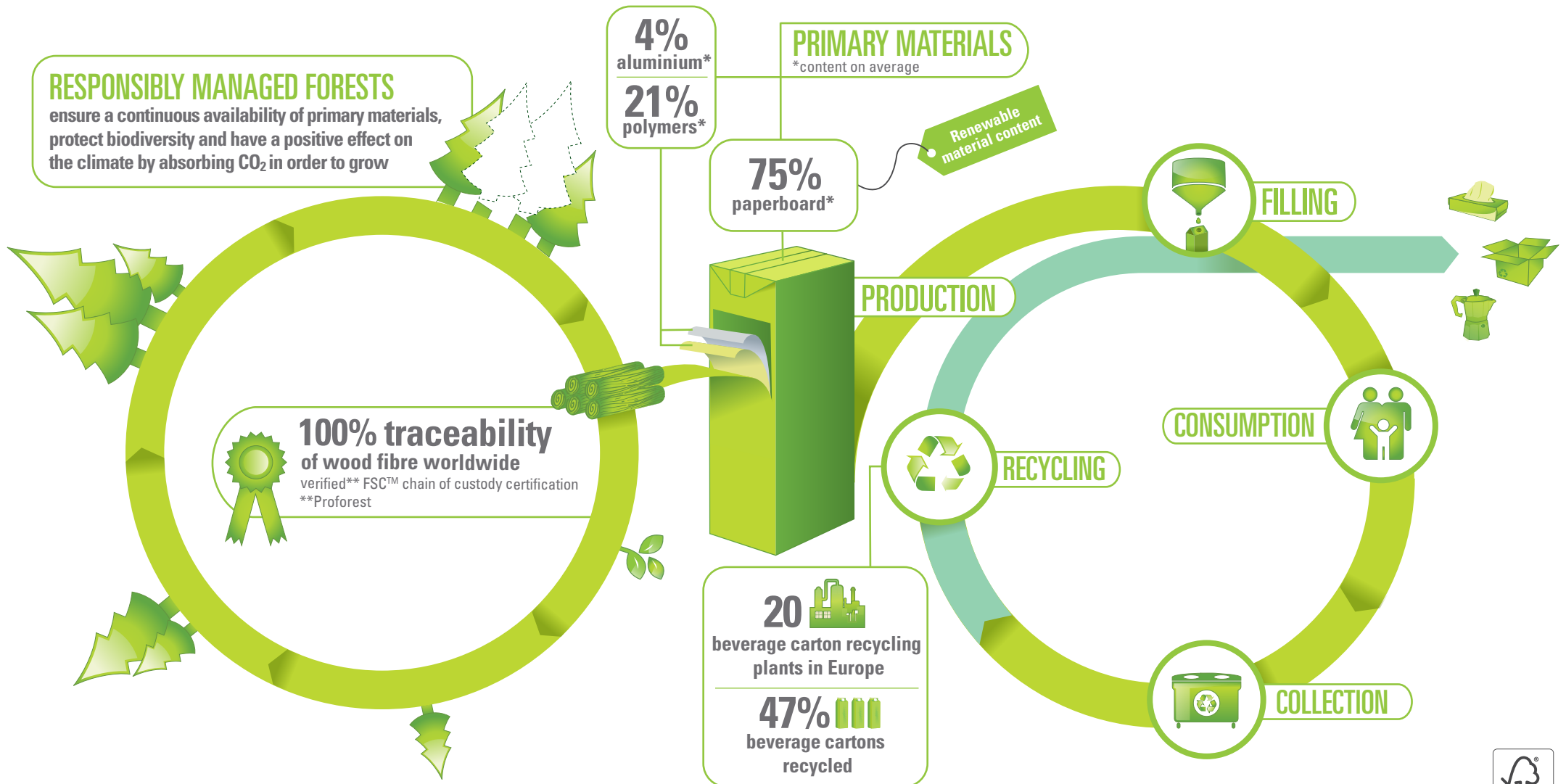


BEVERAGE CARTONS CONTRIBUTE TO A CIRCULAR ECONOMY

- responsible sourcing
- renewable materials
- supporting recycling



THE CIRCULAR ECONOMY PACKAGE SHOULD:

ENCOURAGE RESPONSIBLE SOURCING
for all primary materials

INCENTIVISE THE USE OF BIO-BASED AND/OR RENEWABLE MATERIALS
starting with packaging

ENSURE THAT ALL RECYCLABLE PACKAGING IS RECYCLED
ban packaging waste from landfill and mandate separate collection of all packaging



The mark of responsible forestry
FSC® N001674

© ACE 2017

